



PERSPECTIVE VIEW OVERALL SF 2512



main level view 1256 sf



800-733-7886
www.liv-space.com
www.boman-kemp.com

Liv-Space (n.) -1. A dry, waterproofed, insulated warm & bright, living space. 2. The first level of living space. 3. Extreme value, low cost. 4. Adds living space at 1/3 the cost of above ground space. 5. Not just a finished basement.



LIV-SPACE LEVEL VIEW 1256 SF

BOMAN KEMP
 COMPANIES
 P.O. BOX 5726
 OGDEN, UTAH 84244
 P 801-733-0815
 F 801-733-0786



BOMAN & KEMP
 THE SOUTHWEST
 COVER SHEET

Affordable,
 Energy Efficient
 Homes



PROJECT # SOUTHWEST
 DRAWN BY Author
 DESIGNED BY Designer
 CHECKED BY Checker

AO

Build What The Client Needs

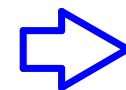


2512 SF Home with Second Level

Cost to Build = \$100.00 per Square Foot
 Construction Cost = \$251,200
 Expensive to Build = Yes
 Energy Efficient = No
 Affordable = No

Same Square Footage / Less Money / Easy Choice

2512 SF Home with Liv-Space Level



Cost to Build = \$70.00 per Square Foot
 Retail Price = \$175,840
 Expensive to Build = No
 Energy Efficient = Yes
 Affordable = Yes

Simple Design Changes Turned This House From 1256SF to 2512SF

Square Footage doubles
with Liv-Space!!

Main Level 1256SF

+

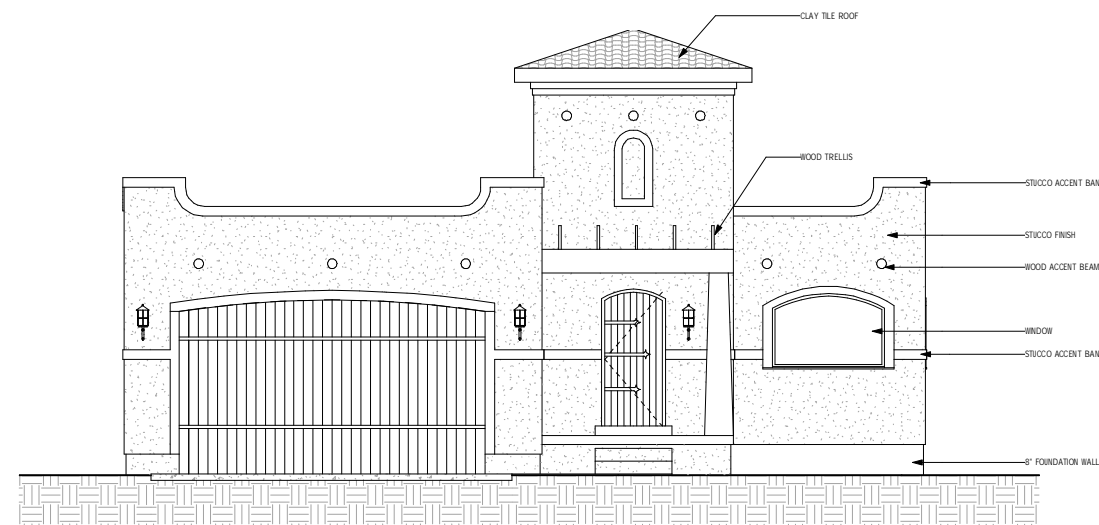
Liv-Space 1256SF

=

Total SF = 2512 SF

Versatility

Boman and Kemp BasementWindow Systems can be placed on any side of the house...including the front yard... low profile.



3 Front Elevation
1/4" = 1'-0"



4 RIGHT SIDE ELEVATION
1/4" = 1'-0"

BOMAN KEMP COMPANIES
 P.O. BOX 4278
 OGDEN, UTAH 84404
 P 801-734-0615
 F 801-734-0786

BASEMENT WINDOW SYSTEMS
 BOMAN KEMP

BOMAN & KEMP
 THE SOUTHWEST
 BUILDING ELEVATIONS

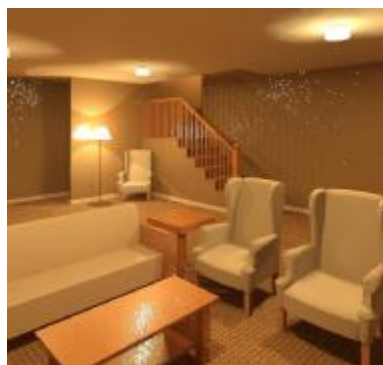
Affordable,
Energy Efficient
Homes

Liv-Space™
FROM BOMAN KEMP

PROJECT # SOUTHWEST
 DRAWN BY DJN
 DESIGNED BY DJN
 CHECKED BY

Make A Grand Entrance

Liv-Space utilizes large open entries and staircases that invite people to the Liv-Space level. The staircase is designed as part of the entire living area.



Stairs

Design a grand staircase leading down to the Liv-Space level instead of up to an expensive second level. Use wider, open designs that make the Liv-Space level part of the home.

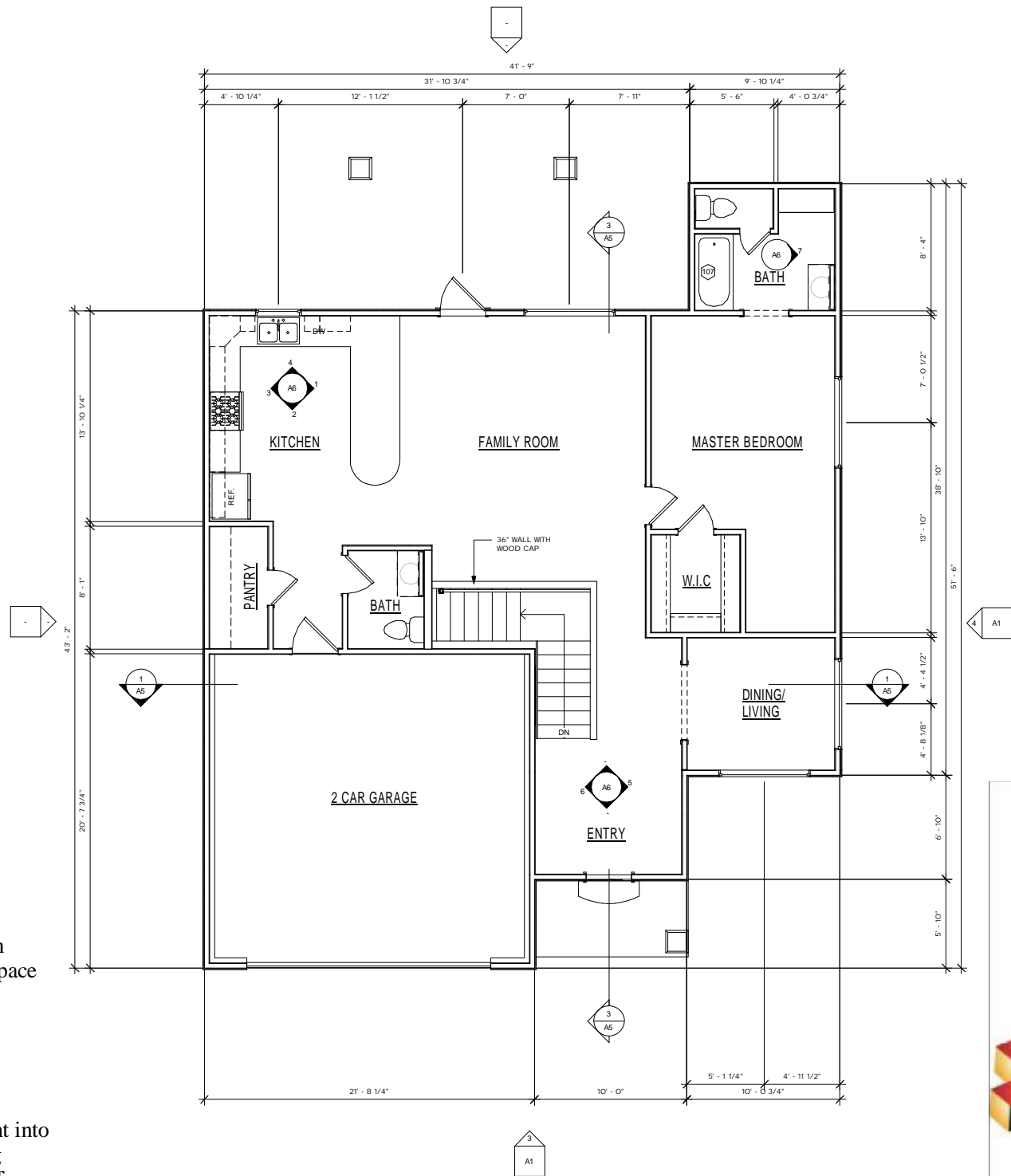


Ceilings

9'-0" ceilings create an open feel to the Liv-Space level.

Liv-Space

Turning your basement into the first level of living space by designing it from the beginning to create first class living areas at a fraction of the cost.



MAIN LEVEL FLOOR PLAN
1256 SQUARE FEET

BOMAN KEMP
COMPANIES
P.O. BOX 1278
OCEAN SPRING,
UTAH 84054
PHONE: 725-9115
FAX: 725-9786

**BASEMENT
WINDOW
SYSTEMS**
BOMAN
KEMP

BOMAN & KEMP
THE SOUTHWEST
FIRST FLOOR PLAN

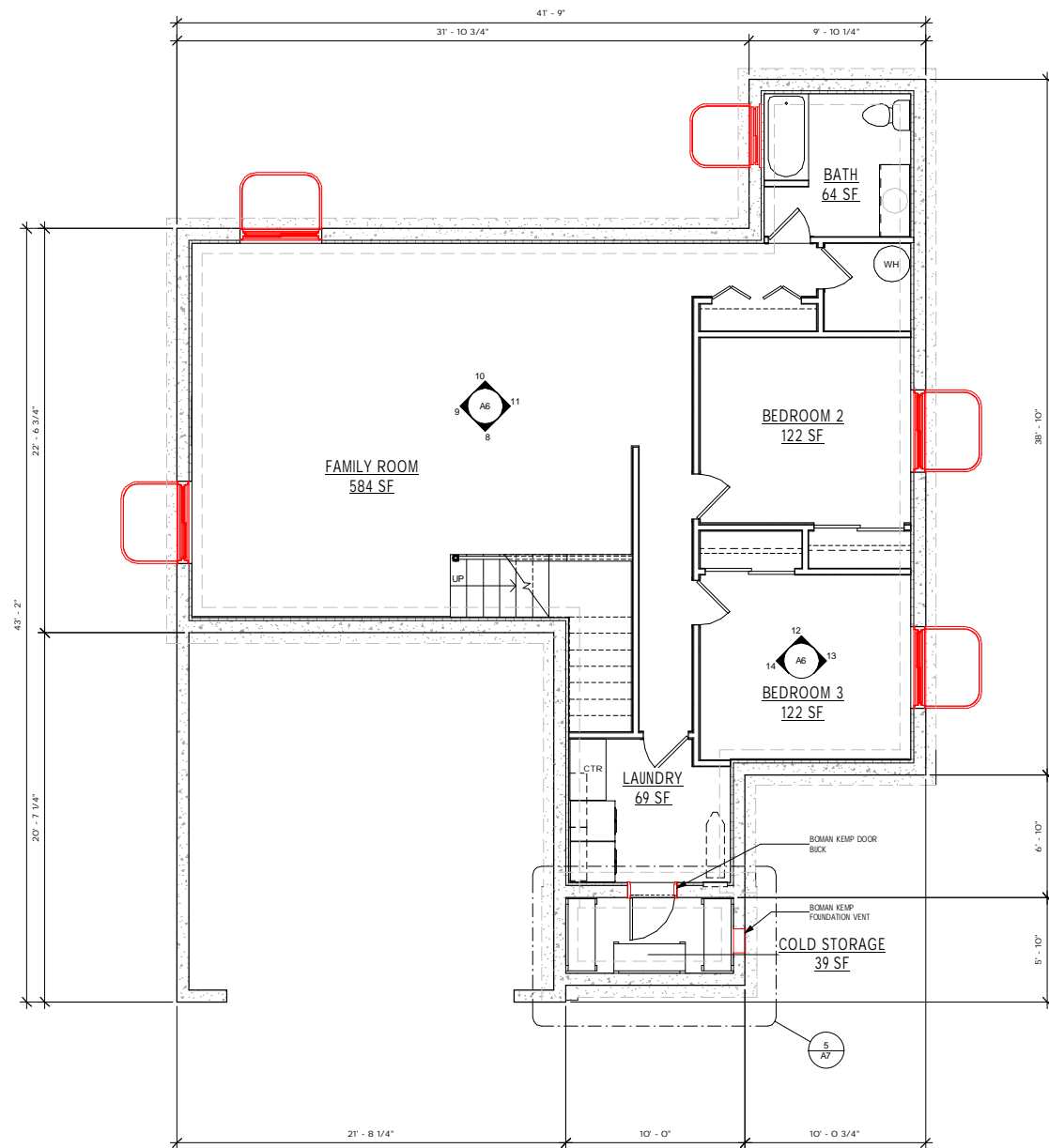
**Affordable,
Energy Efficient
Homes**

Liv-Space™
FROM BOMAN KEMP

PROJECT # SOUTHWEST
DRAWN BY DJN
DESIGNED BY DJN
CHECKED BY

A2

FROM DESIGN TO REALITY- LIV-SPACE TRANSFORMS FROM PAPER TO HIGH QUALITY LIVING SPACE.



LIV-SPACE FLOOR PLAN
1256 SQUARE FEET

Quality

One window for every 200 square feet makes the Liv-Space level into quality living space!



Architectural Design

Designed as a finished level of the house, right from the architectural drawing board. It's not the foundation to hold up the first level, it is the first level.



Liv-Space Features

- Large, Comfortable Family Room
- 2 Spacious Bedrooms with Boman Kemp 4050 window systems
- Full Bathroom
- Large Laundry Room with Counter Space
- Spacious Storage area
- Open stairway from Main Level
- Energy efficient, cooler in the summer.

All at a much cheaper cost than expensive, second story living.

BOMAN KEMP
COMPANIES
P.O. BOX 4726
OGDEN, UTAH 84244
PHONE: 724-0815
FAX: 724-0786



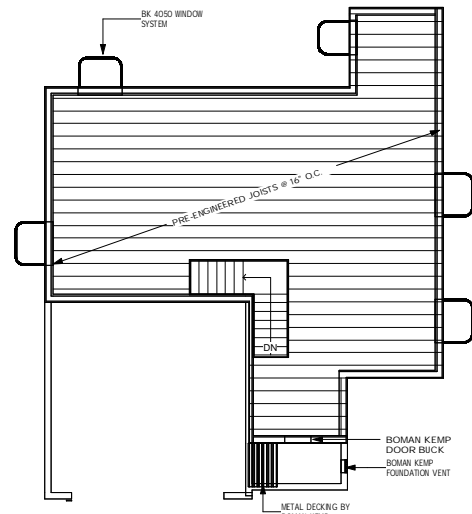
BOMAN & KEMP
THE SOUTHWEST

LIV-SPACE FLOOR PLAN

Affordable,
Energy Efficient
Homes



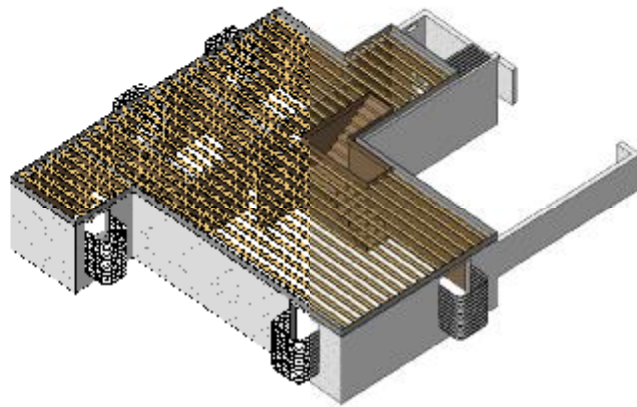
PROJECT # SOUTHWEST
DRAWN BY Author
DESIGNED BY Designer
CHECKED BY Checker



2 First Floor Framing
1/8" = 1'-0"

NOTE:

THIS PLAN IS FOR REPRESENTATION ONLY AND IS NOT TO BE CONSIDERED AS AN ENGINEERED FLOOR JOIST PLAN OR LAYOUT. CONSULT A STRUCTURAL ENGINEER FOR ACTUAL DESIGN.

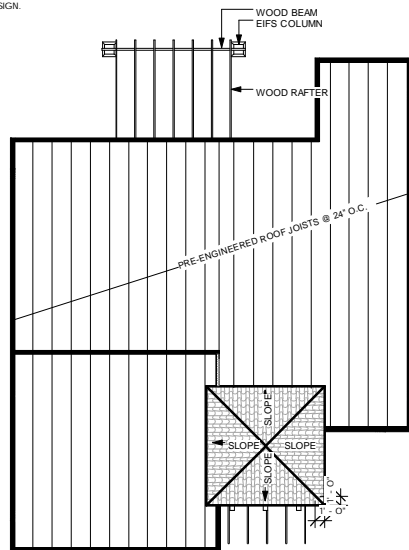


3 CONCEPTUAL FLOOR FRAMING

Making Your Home Look Great Inside and Out

NOTE:

THIS PLAN IS FOR REPRESENTATION ONLY AND IS NOT TO BE CONSIDERED AS AN ENGINEERED ROOF TRUSS PLAN OR LAYOUT. CONSULT A STRUCTURAL ENGINEER FOR ACTUAL DESIGN.



1 ROOF FRAMING PLAN
1/8" = 1'-0"



FRONT ELEVATION



RIGHT SIDE ELEVATION

Boman Kemp The Leader in Basement Window Systems CONSTRUCTION



STEP ONE



STEP TWO



STEP THREE



STEP FOUR



STEP FIVE

COMPLETION

BOMAN KEMP COMPANIES
P.O. BOX 2726
OGDEN, UTAH 84404
PHONE: 724-9415
FAX: 724-9786



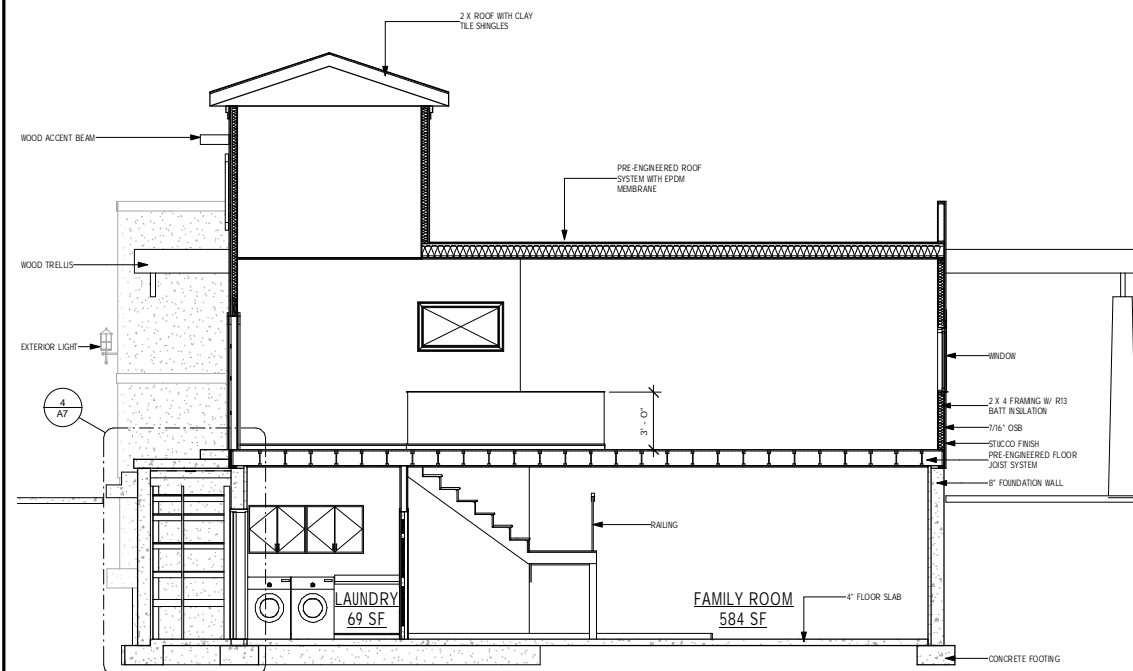
BOMAN & KEMP
THE SOUTHWEST
ROOF PLAN

Affordable,
Energy Efficient
Homes

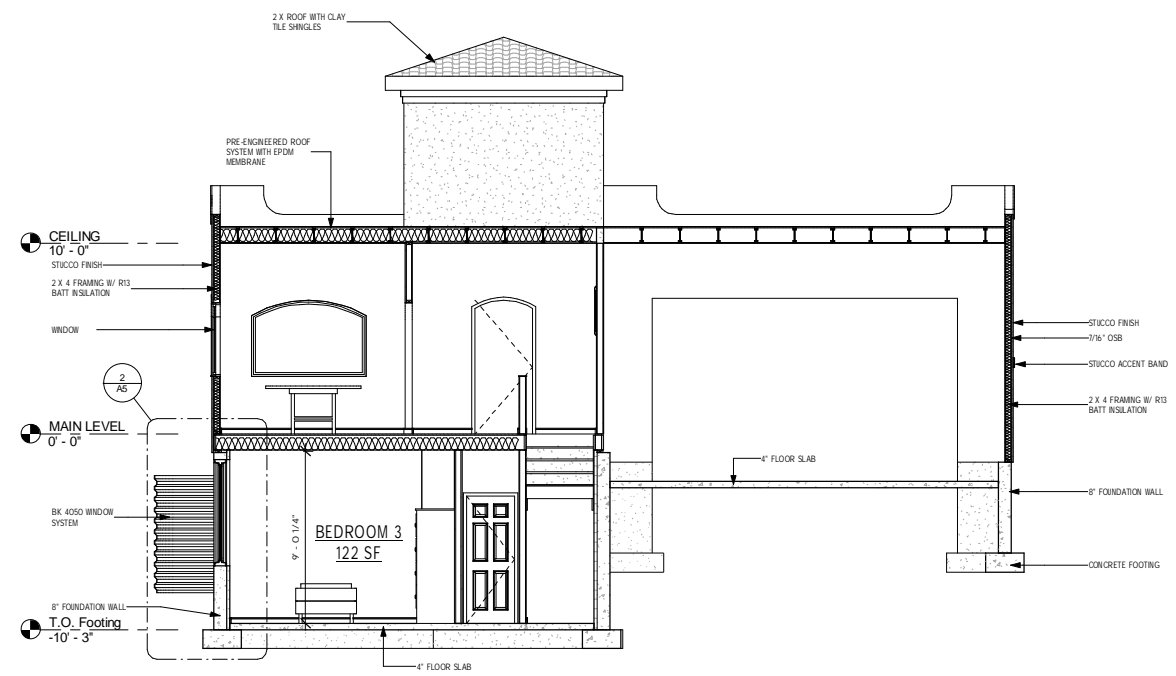


PROJECT # SOUTHWEST
DRAWN BY Author
DESIGNED BY Designer
CHECKED BY Checker

BOMAN KEMP 4050 BASEMENT WINDOW SYSTEM



3 BUILDING SECTION
1/4" = 1'-0"



1 BUILDING SECTION
1/4" = 1'-0"



Boman Kemp 4050-8" Steel Window Buck



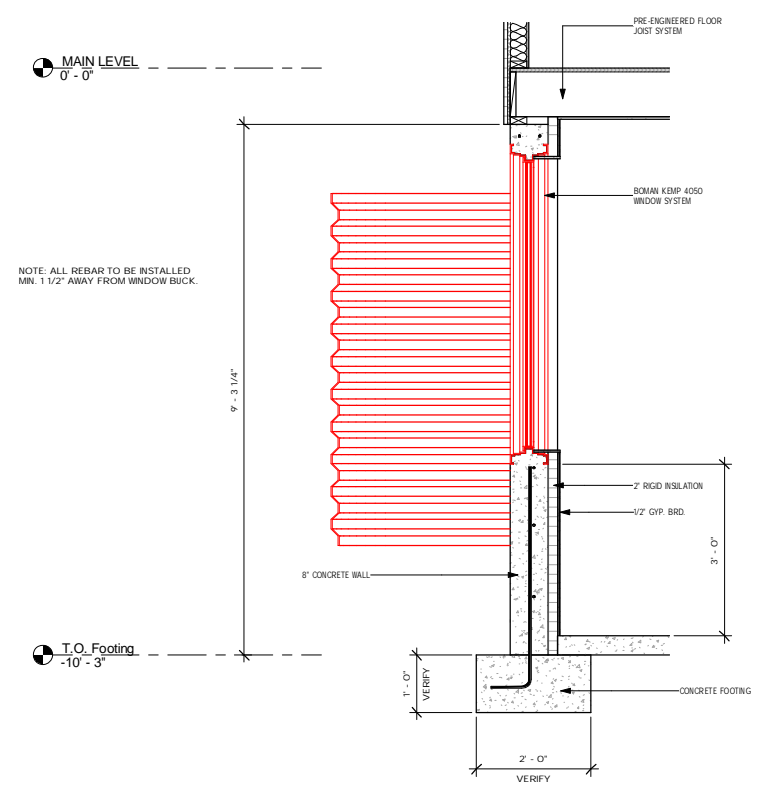
Boman Kemp 4050 Low E Vinyl Window with Optional Grids



Boman Kemp Easy Well 5236-72 with 5'-0" Safety Ladder



Boman Kemp Safety Grate EG5236 with Clear Cover EGC5236



2 FOUNDATION WALL SECTION
3/4" = 1'-0"

BOMAN & KEMP COMPANIES
P.O. BOX 9725
CORONA, CA 92624
TEL: 949-440-1111
FAX: 949-440-1112
www.boman-kemp.com
www.liv-space.com

BASEMENT WINDOW SYSTEMS

BOMAN KEMP

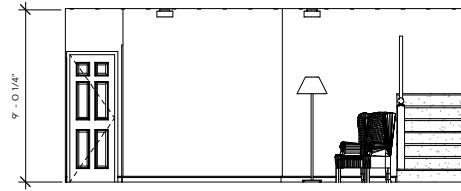
THE SOUTHWEST

Liv-Space
FLOOR-BY-FLOOR LIVING

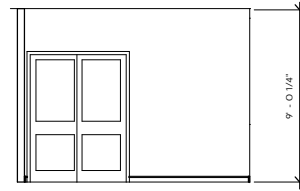
Affordable, Energy Efficient Homes

DESCRIPTION:	PRELIMINARY DESIGN
DATE:	2-19-09
PROJECT #:	SOUTHWEST
DRAWN BY:	Author
DESIGNED BY:	Designer
CHECKED BY:	Checker

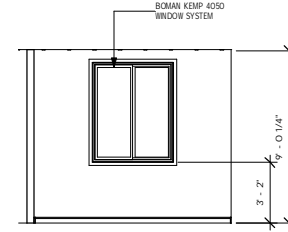
BUILDING SECTIONS



11 LIV-SPACE INT. ELEV.
1/4" = 1'-0"



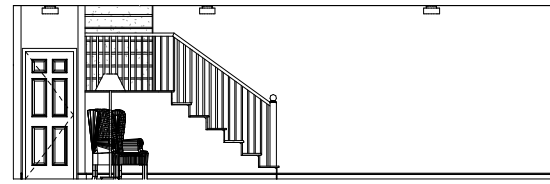
12 LIV-SPACE INT. ELEV.
1/4" = 1'-0"



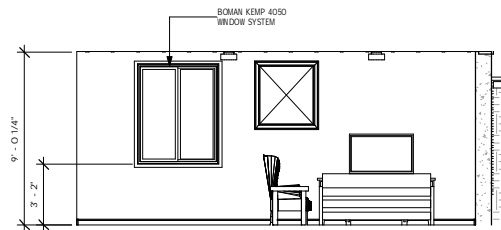
13 LIV-SPACE INT. ELEV.
1/4" = 1'-0"



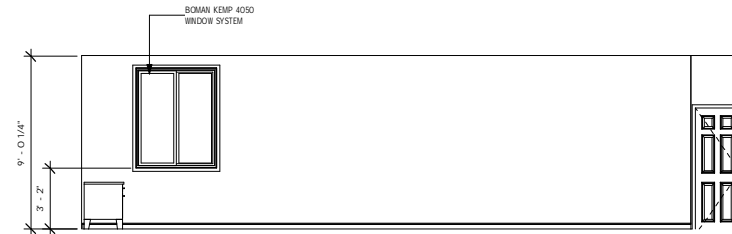
14 LIV-SPACE INT. ELEV.
1/4" = 1'-0"



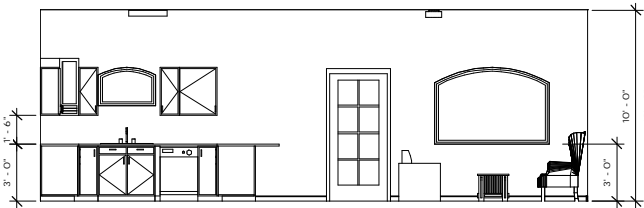
8 LIV-SPACE INTERIOR ELEVATION
1/4" = 1'-0"



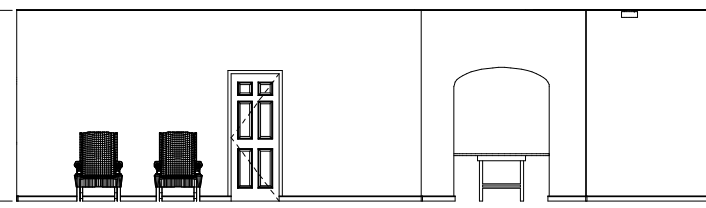
9 LIV-SPACE INT. ELEV.
1/4" = 1'-0"



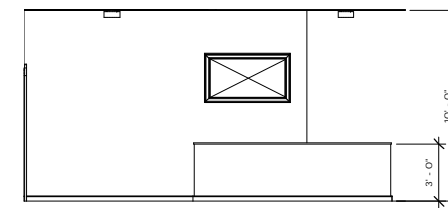
10 LIV-SPACE INTERIOR ELEVATION
1/4" = 1'-0"



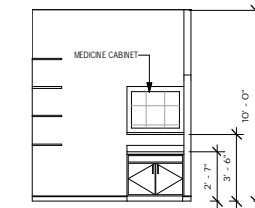
4 INTERIOR ELEVATION
1/4" = 1'-0"



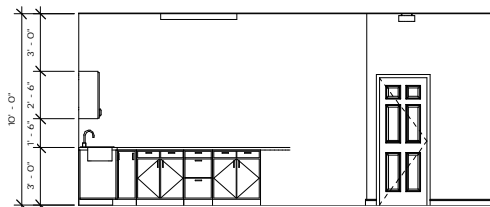
5 INTERIOR ELEVATION
1/4" = 1'-0"



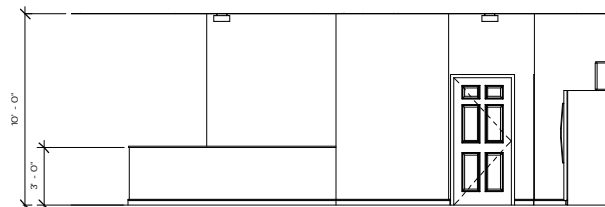
6 INTERIOR ELEVATION
1/4" = 1'-0"



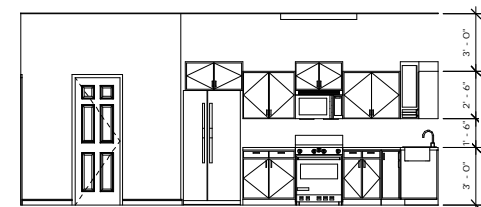
7 INTERIOR ELEVATION
1/4" = 1'-0"



1 INTERIOR ELEVATION
1/4" = 1'-0"



2 INTERIOR ELEVATION
1/4" = 1'-0"



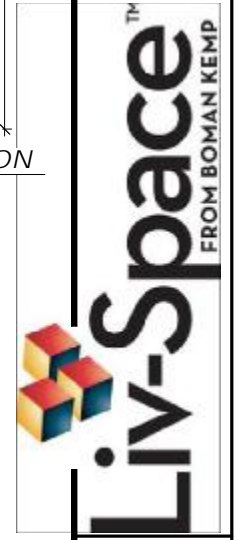
3 INTERIOR ELEVATION
1/4" = 1'-0"

BOMAN KEMP COMPANIES
P.O. BOX 4278
OCEAN GROVE
UTAH 84064
PHONE: 725-9515
FAX: 725-9786



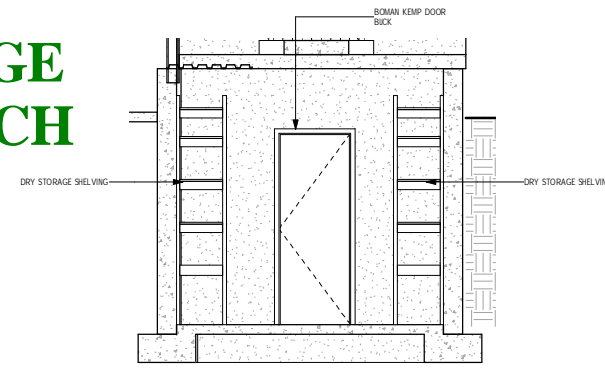
BOMAN & KEMP
THE SOUTHWEST
INTERIOR ELEVATIONS

Affordable,
Energy Efficient
Homes

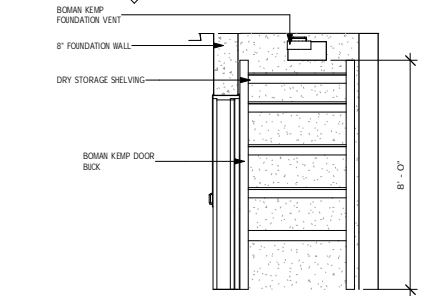


PROJECT # SOUTHWEST
DRAWN BY Author
DESIGNED BY Designer
CHECKED BY Checker

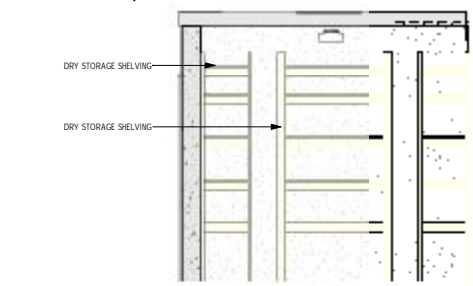
ADD COLD STORAGE UNDER YOUR PORCH



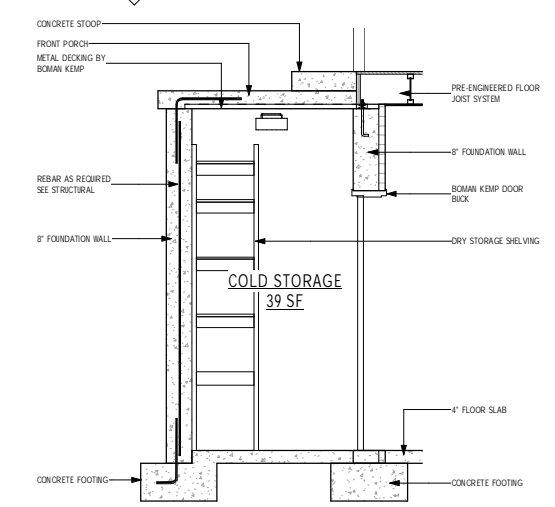
1 COLD STORAGE
3/8" = 1'-0"



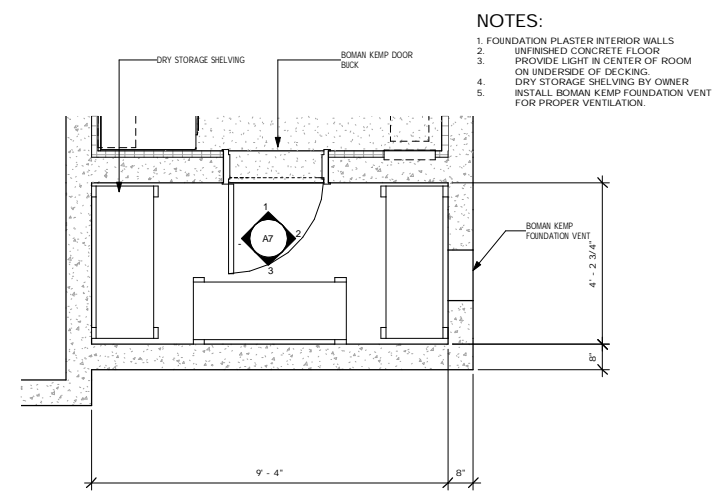
2 COLD STORAGE
3/8" = 1'-0"



3 COLD STORAGE
3/8" = 1'-0"



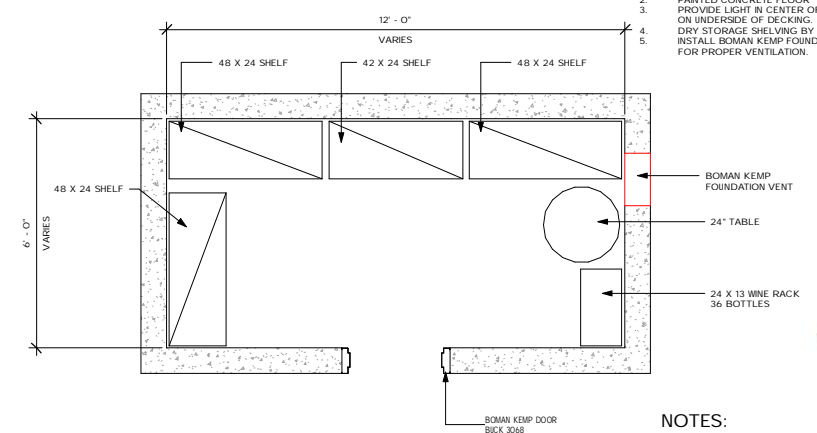
4 Dry Storage Section
1/2" = 1'-0"



5 ENLARGED COLD STORAGE PLAN
1/2" = 1'-0"

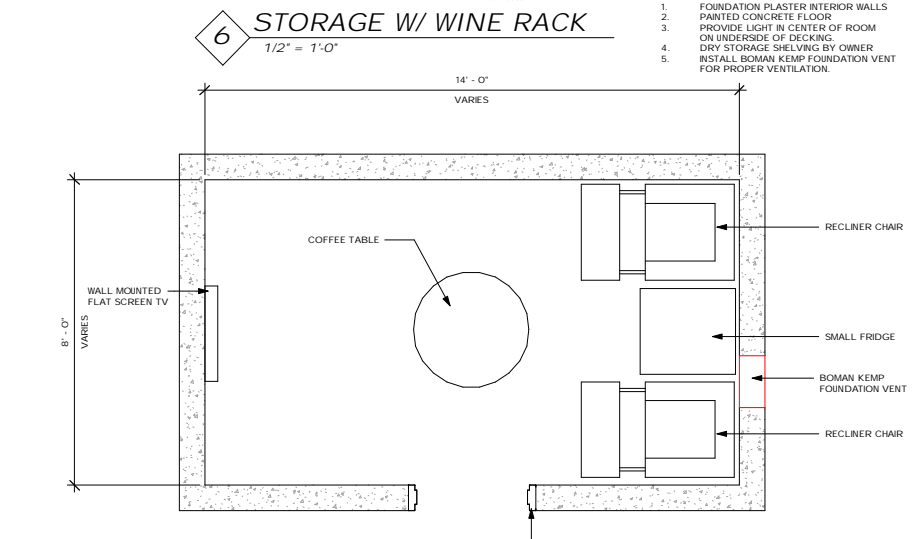
- NOTES:**
- FOUNDATION PLASTER INTERIOR WALLS
 - UNFINISHED CONCRETE FLOOR
 - PROVIDE LIGHT IN CENTER OF ROOM ON UNDERSIDE OF DECKING
 - DRY STORAGE SHELVING BY OWNER
 - INSTALL BOMAN KEMP FOUNDATION VENT FOR PROPER VENTILATION.

OPTIONS



6 STORAGE W/ WINE RACK
1/2" = 1'-0"

- NOTES:**
- FOUNDATION PLASTER INTERIOR WALLS
 - PAINTED CONCRETE FLOOR
 - PROVIDE LIGHT IN CENTER OF ROOM ON UNDERSIDE OF DECKING
 - DRY STORAGE SHELVING BY OWNER
 - INSTALL BOMAN KEMP FOUNDATION VENT FOR PROPER VENTILATION.



7 OPTIONAL TV ROOM
1/2" = 1'-0"

- NOTES:**
- FOUNDATION PLASTER INTERIOR WALLS
 - PAINTED CONCRETE FLOOR
 - PROVIDE LIGHT IN CENTER OF ROOM ON UNDERSIDE OF DECKING
 - DRY STORAGE SHELVING BY OWNER
 - INSTALL BOMAN KEMP FOUNDATION VENT FOR PROPER VENTILATION.



BK DOOR BUCK

BOMAN KEMP COMPANIES
P.O. BOX 3728
OGDEN, UTAH 84244
P 801-734-0615
F 801-734-0786



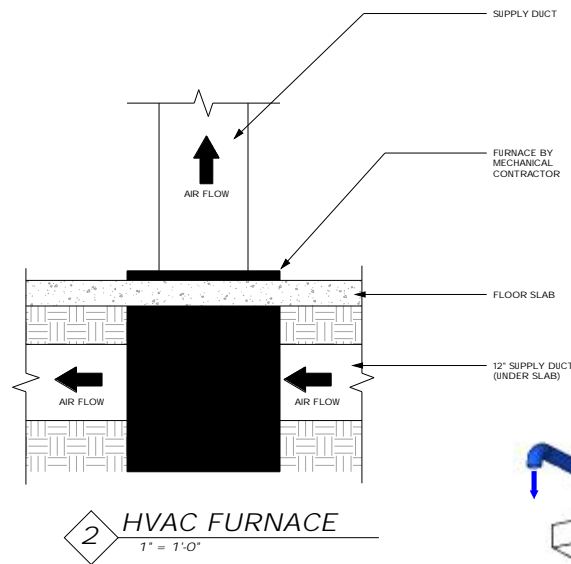
BOMAN & KEMP
THE SOUTHWEST
COLD STORAGE

Affordable,
Energy Efficient
Homes

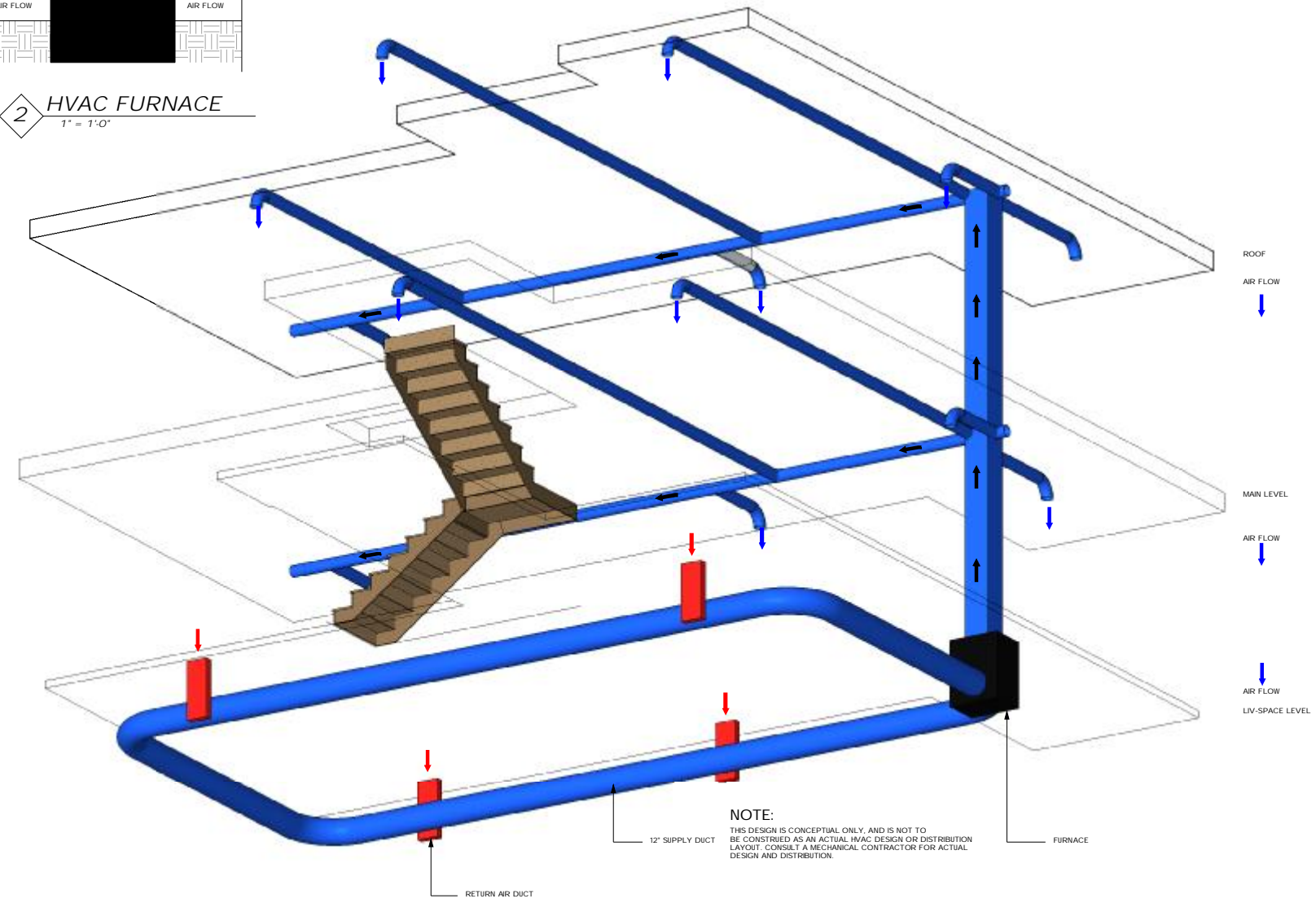


PROJECT # SOUTHWEST
DRAWN BY Author
DESIGNED BY Designer
CHECKED BY Checker

COOL YOUR HOME FOR A FRACTION OF THE COST OF A STANDARD AIR CONDITIONING SYSTEM
USE THE COOL AIR UNDER GROUND TO KEEP YOUR HOME AT A COMFORTABLE TEMPERATURE.



2 HVAC FURNACE
1" = 1'-0"



NOTE:
THIS DESIGN IS CONCEPTUAL ONLY, AND IS NOT TO BE CONSIDERED AS AN ACTUAL HVAC DESIGN OR DISTRIBUTION LAYOUT. CONSULT A MECHANICAL CONTRACTOR FOR ACTUAL DESIGN AND DISTRIBUTION.

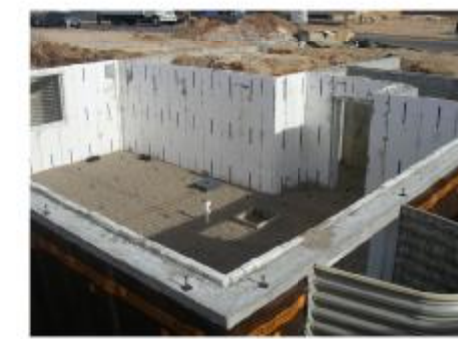
1 CONCEPTUAL HVAC DISTRIBUTION



BELOW SLAB DUCTING



BELOW SLAB DUCTING



READY FOR FLOOR SLAB

BOMAN KEMP COMPANIES
P.O. BOX 4726
OGDEN, UTAH 84244
PHONE: 724-9815
FAX: 724-9786



BOMAN & KEMP
THE SOUTHWEST
HVAC SYSTEM

Affordable,
Energy Efficient
Homes



PROJECT # SOUTHWEST
DRAWN BY Author
DESIGNED BY Designer
CHECKED BY Checker